

GBLZ4 B[30000]

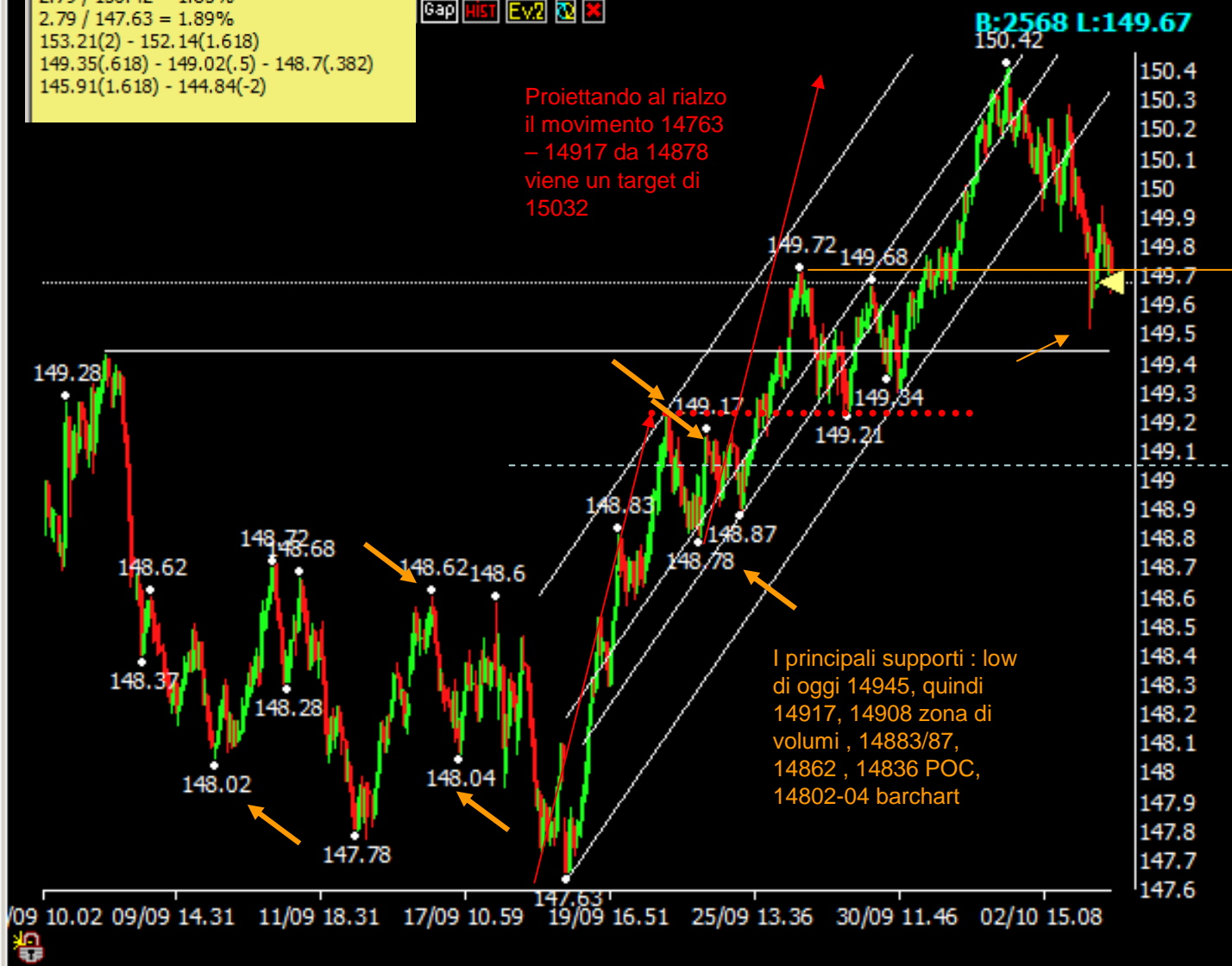
Update 3/10
ore 1644

01/10/14-21.59.59 : 150.42
 19/09/14-08.51.34 : 147.63
 Diff : 2.79
 $2.79 / 150.42 = 1.85\%$
 $2.79 / 147.63 = 1.89\%$
 153.21(2) - 152.14(1.618)
 149.35(.618) - 149.02(.5) - 148.7(.382)
 145.91(1.618) - 144.84(-2)

Gap HIST Ev1 Ev2

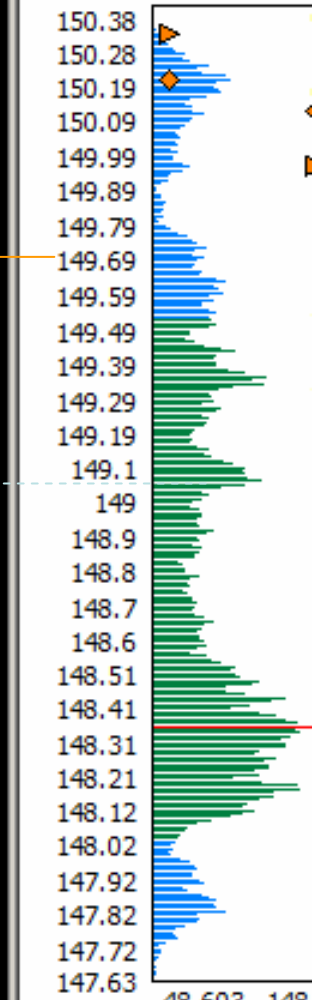
Proiettando al rialzo
 il movimento 14763
 - 14917 da 14878
 viene un target di
 15032

I principali supporti : low
 di oggi 14945, quindi
 14917, 14908 zona di
 volumi , 14883/87,
 14862 , 14836 POC,
 14802-04 barchart



GBLZ4 G5C

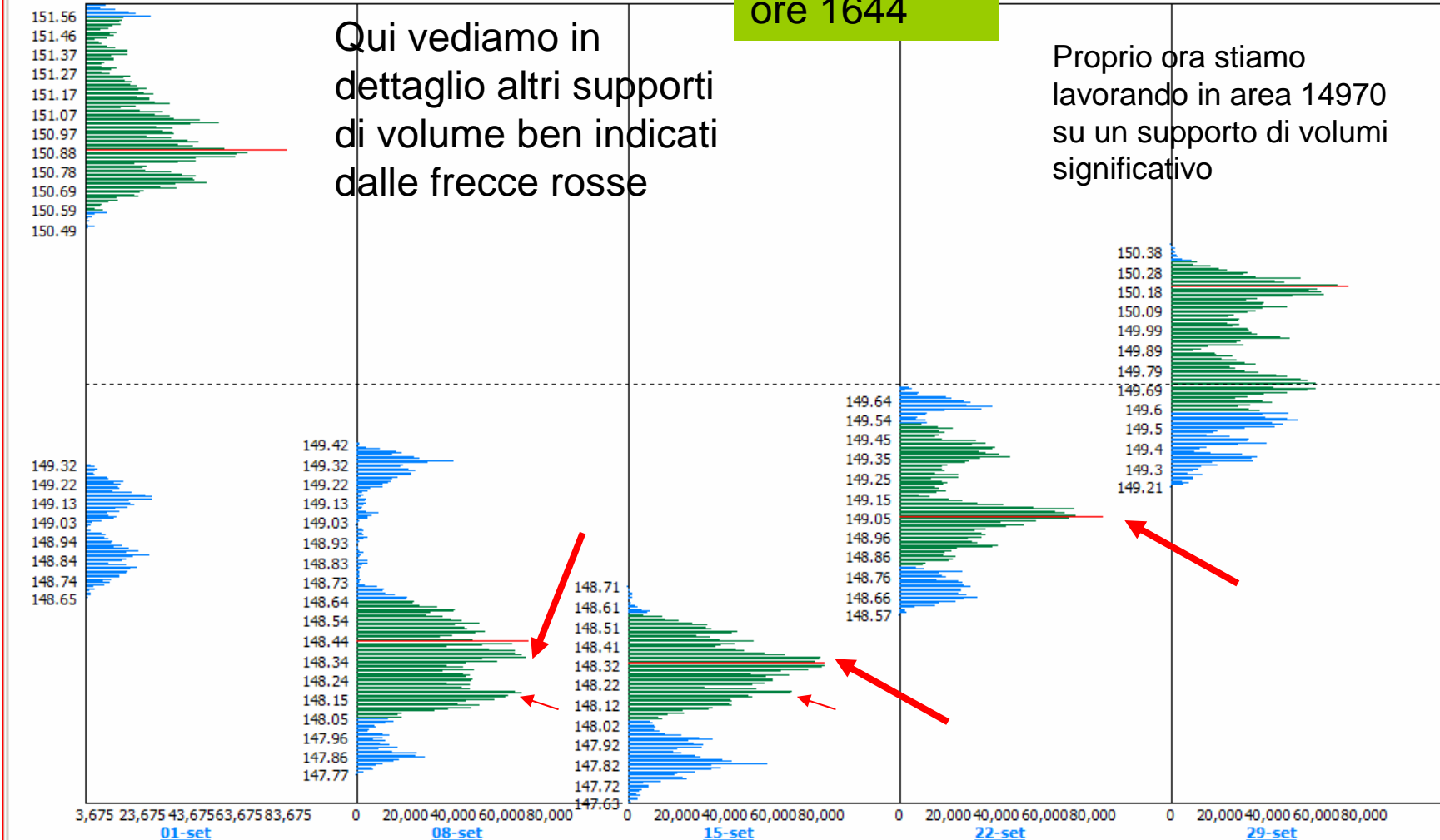
148.8
 150.42 147.63
 148.36 150.12
 135979 40703



48,603 148,
 05/09/14-03/10/14

151.62 148.65	149.43 147.77	148.71 147.63	149.72 148.57	150.42 149.21
150.890	148.440	148.330	149.060	150.21 149.72 149.72
5 17299	35913 21472	32653 21617	28827 12122	35992 31194

Update 3/10
ore 1644



Qui vediamo in dettaglio altri supporti di volume ben indicati dalle frecce rosse

Proprio ora stiamo lavorando in area 14970 su un supporto di volumi significativo

